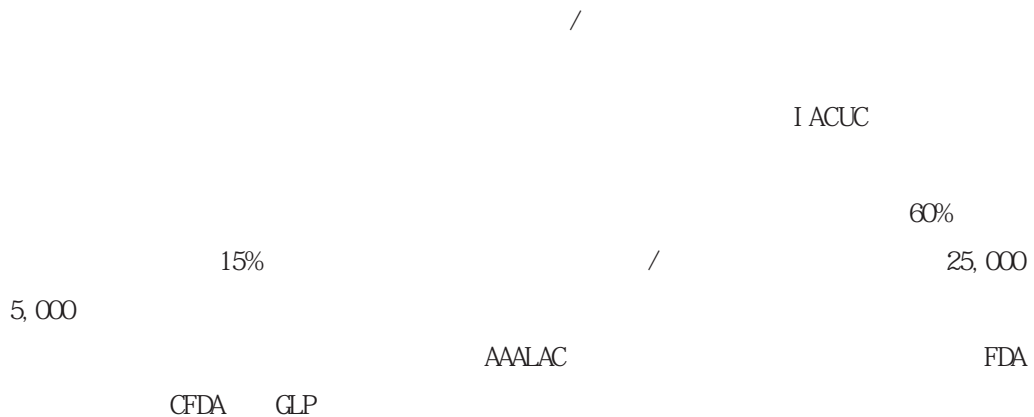


# Medicilon—CFDA GLP FDA GLP AAALAC



the global The services  
 across biology, chemistry and preclinical research are specially designed to help clients develop their research and  
 Preclinical department in Medicilon has extensive and  
 drug development, preclinical studies and  
 services cover various aspects of preclinical services, including protocol designing, in-life studies,  
 sample analysis, professional data analysis,

the  
 animal facility, which is





## ADME

/



- 
- Bioanalysis
- 
- Bioavailability,
- s of gender
- on pharm
- Stability in vehicles and plasma
- 
- metabolic stability
- 
- Permeability studies
- Plasma protein binding studies
- 
- 
- 
- 



- & P
- 
- 
- 
- 
- 
- 
- 
- 
- 
- 
- 
- 
- 
-



- Mass balance



- 
- Protein



- /
- 
- 



- 
- 
- 
- 
- 

prepare the DMPK package for CFDA and US FDA IND filing and have

我们已经成功地帮助很多客户向 和 递交符合新药注册要求的药代申报资料，并已接受多次核查，且顺利通过所有核查。

*Quick study initiation and scheduling flexibility will help you make your decisions faster and reduce your total research costs!*

实验的快速启动和安排的灵活性将帮助您做出更快的决定和减少总的研究费用！



疾病	模型	动物
	Hot-Plate	Mouse/ rat
	Tail tick	Mouse/ rat
	formalin test phase phase	



<b>Head and Neck Cancer</b>	KB, FaDu
<b>Nasopharyngeal Carcinoma Stem Cell</b>	S18, S26
<b>Lung Cancer</b>	DMS114, NCI-H69, NCI-H146, NCI-H209, NCI-H446, NCI-H526, NCI-H1688,95-D, A549, Calu-1, Calu-3, Calu-6, HCC827, NCI-H226, NCI-H292, NCI-H358, NCI-H441, NCI-H460, NCI-H520, NCI-H522, NCI-H1299, NCI-H1437, NCI-H1650, NCI-H1975, NCI-H1993, NCI-H2009, NCI-H2122, NCI-H2126, NCI-H2228, PC-10, QG-56, LLC
<b>Breast Cancer</b>	Bcap-37, BT-474, 2LMP, MCF7, MDA-MB-231, MDA-MB-435s, SUM159, MDA-MB-468, ZR-75-1, ZR-75-30
<b>Gastric Cancer</b>	BGC-823, HGC-27, MKN-28, MKN-45, NCI-N87, NUGC-3, SCH, SGC-7901, SNU-5, SNU-16, MGC-803
<b>Pancreatic Cancer</b>	AsPC-1, BxPC-3, Capan-1, Capan-2, CFPAC-1, HPAF-II, MIAPaCa-2, PANC-1, SU.86.86
<b>Renal Cancer</b>	ACHN, OS-RC-2, 786-O
<b>Hepatocellular Carcinoma</b>	Bel-7402, Hep-3B, Huh-7, PLC/PRF/5, QGY-7703, SK-HEP-1, SMMC-7721
<b>Glioblastoma</b>	U87-MG
<b>Colon and Cecum Cancer</b>	COLO 201, COLO 205, COLO 320 DM, CW-2, DLD-1, HCT-8, HCT-15, HCT116, HCT116 P53 K0(-/-), HT-29, LoVo, LS1034, LS174T, LS411N, NCI-H716, RKO, SW480, SW620, WiDr
<b>Prostate Cancer</b>	22Rv1, CL-1, DU145, LNCap Clone FGC, PC-3
<b>Urinary Bladder</b>	HT-1197, HT-1376, RT4, SCaBER, SW780, T24
<b>Ovary Cancer</b>	ES-2, HO-8910PM, PA-1, SK-OV-3, OVCAR-3
<b>Endometrium/Hystero carcinoma</b>	AN3 CA, HEC-1-A, ME-180, MFE-280
<b>Skin Cancer Cell</b>	A431
<b>Melanoma</b>	A375, B16, A2058, C32, HMCB, SK-MEL-30
<b>Osteosarcoma Cell</b>	MG-63, SJSA-1,
<b>Sarcoma</b>	S-180
<b>Muscle, Striated</b>	SJCRH30
<b>Myeloma</b>	KMS-11, KMS-26, RPMI-8226
<b>Leukemia / Lymphoma</b>	U937, THP-1, MV-4-11, HEL, TF-1a, ML-2, HL-60, L1210, K562, KARPAS-299, Daudi, Raji, Ramos, ARH-77, KMS-12-BM, KG-1,

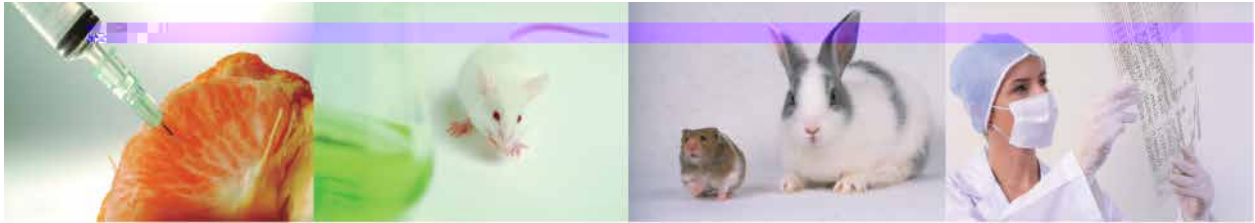
\*

美迪西也提供原代肿瘤模型用于药物筛选。



疾病	模型	动物
diabetes	STZ-induced	Mouse/ rat
	genetically engineered	b/db, ob/ob Mouse b/db, ob/ob
	High fat diet-induced obesity	Mouse
	genetically engineered, diet-induced	hesus Monkey
obesity	genetically engineered	b/db, ob/ob Mouse b/db, ob/ob
	High fat diet-induced obesity	





with

GLP GLP



- Single dose toxicity study
- Safety pharmacology study



- 
- 
- 
- 
- 
- 
- 

- Topical toxicity study



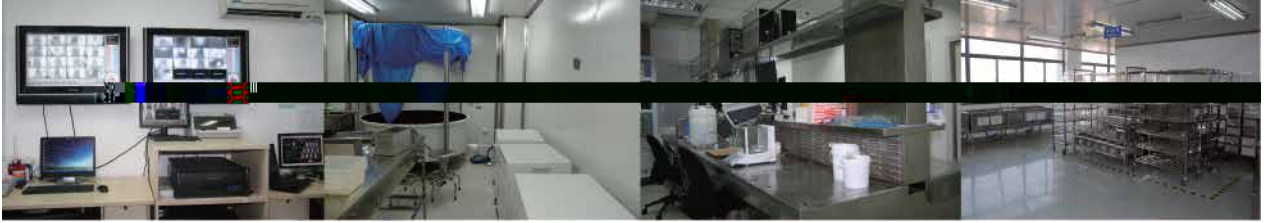
- State-of-the-art automated equipment:



- 
- 
- 

- Professional microscopic review by

- 
- 
- 
- 
-



- Hematology



- 

- 

pH

- 

-

-



## Facilities and Capability

- 总设施面积      平方米
- 功能区域      平方米
- 犬动物房      平方米：最多可容纳    只
- 非人类灵长动物房      平方米：  
最多可容纳    只
- 啮齿类屏障系统动物房      平方米：    和  
非    区域；    区域最多可容纳    只；  
非    区域最多可容纳    只
- 设施的设计和运营均符合国际和国内的标准

gulations



Clean hallway in barrier system  
屏障系统洁净走廊



Non-clean hallway in barrier system  
屏障系统非洁净走廊



Specimen  
标本室



湿标本室



大(小)鼠饲养室



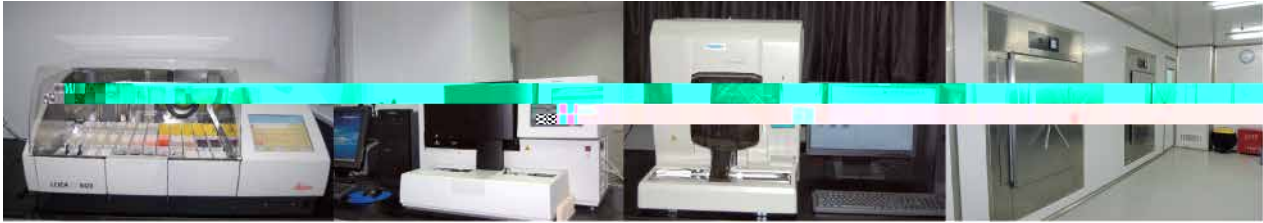
犬类饲养室



非人灵长类饲养室



解剖台



## Drug evaluation research completed from 2008 to 2012

每年完成超过 项药物临床前安全评价研究，包括单次给药毒性试验、反复给药毒性试验、局部毒性试验、毒代动力学试验和药代动力学试验。公司现将药物安全评价能力扩展至安全药理试验、免疫原性试验、遗传毒性和生殖毒性试验。目前公司正开展4个新药全套临床前评价和研究的项目用于申报 。

equipments and

和 软件用于数据采集、分析、储存和格式化报告,所有的设备和仪器已验证或正在验证包括跟数据生成有关的设备和仪器软件。

selected 选自客户的评估报告

Please contact us for more information on how we can help move your drug along the development pathway.